

Applications:

De-inking Production:

Recovery of:

- Office paper
- News
- Magazines
- Glossy
- Catalogues

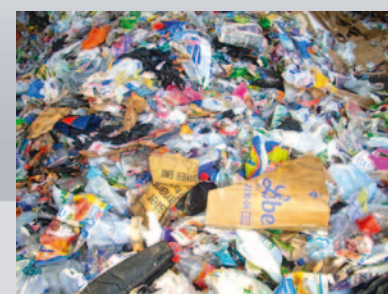
Separation of:

- Brown and gray cardboard
- Corrugated cardboard
- Folded boxes
- Coloured printed cardboard
- Synthetic papers
- Plastic-laminated papers

Separation of non-paper products:

- Plastics
- Liquid packaging board / Tetra
- Rubber
- Metals
- And many more ...

Production of woodfree paper



PAPER SORTING

Sensor based sorting technology for paper recycling

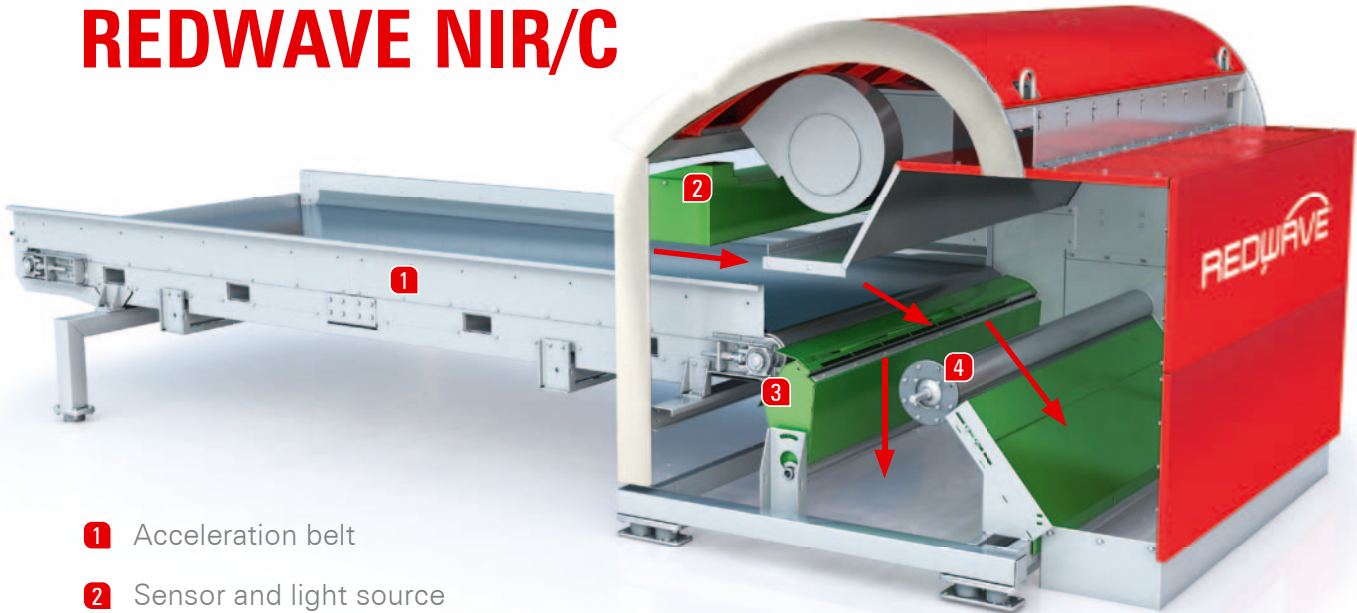


REDWAVE, a trademark of BT-Wolfgang Binder GmbH, Muehlwaldstrasse 21, 8200 Gleisdorf, Austria
Phone: +43 3112 8377-0, Fax: +43 3112 8377-2204, E-mail: office@redwave.at, Web: www.redwave.at



www.redwave.at

REDWAVE NIR/C



- 1 Acceleration belt
- 2 Sensor and light source
- 3 Ejection unit
- 4 Driven divider plate



REDWAVE systems can separate valuable paper fractions from recovered paper with highest levels of purity. The type and the colour of the materials being sorted can be recognized and separated in one step. Different material grades such as colour printed and non printed cardboard, magazines, news and pams, plastics, etc. are identified by the Near Infrared Technology. Having a combined NIR/Colour sensor process the infeed materials can be sorted by colour and type in the once process.

Functional principle of REDWAVE:

REDWAVE systems are efficient high-performance machines for the processing of recovered paper. The sorting material is pre-processed by ballistic separators, disc or star screens, separating and singulating the materials from other items, before entry to the REDWAVE. To achieve excellent sorting results the infeed material should have a size between 100 x 100 mm and 400 x 600 mm. The material is scanned and if identified as a match to the set parameters, a signal is sent to the ejection units. High speed valves and air jets, operated by compressed air, eject the identified material. The number of valves activated per recognized object depends on the size of the particle to be separated.



Unique feature:

- Recognition of:
- Flexoprint
 - Woodfree paper
 - Etc.

REDWAVE systems guarantee highest reliability and efficiency in the whole sorting process. The infeed material can be separated by colour or different materials, depending on the requirements.

Sensor Technologies:	Tasks:
Multi Sensor REDWAVE NIR/C	Separation of different materials and colours in only one sorting step
Inductive Metal Detector	Elimination of ferrous and nonferrous metals due to their conductivity

Size ranges:	Working width:	Sorting systems:
from 50 mm to 600 mm	from 1.000 mm to 2.800 mm	Belt and gravity sorter

REDWAVE makes your material valuable

Characteristics:

- Latest sorting technology
- Highest reliability and efficiency
- Very flexible sorting systems
- User friendly, low-maintenance, reliable in operation
- Possibility for quantitative identification of for example flexoprint, woodfree paper, etc.
- Highest sorting accuracy at high throughputs
- Increase the value of the material
- Increase overall profitability
- Modem and remote maintenance

